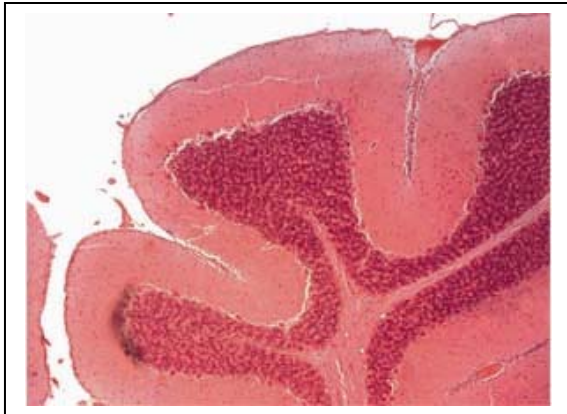


High Resolution CMOS Color or Monochrome

Microscopy Camera for Qualitative Image Archiving

Ci h]bY"DYfZcfa UbW": YUhi fYg"

Lumenera's INFINITY CMOS digital camera is designed to be a cost-effective, versatile solution for clinical, life science, materials science and educational professionals. With 1600x1200 resolution and on-board processing, the INFINITY delivers outstanding image quality for a wide variety of scientific applications.



Live video preview provides for real-time focus, while auto exposure and auto white balance efficiently capture your optimal image. An intuitive user application provides camera controls, while full integration to popular third-party imaging applications is available through our TWAIN drivers.

The USB 2.0 digital interface ensures a simple plug and play installation – and one standard cable minimizes camera clutter. No framegrabber required.

INFINITY cameras are supported by an experienced team of technical support and imaging experts. We understand your imaging needs and are here to help you get the most out of your camera.

- <[\ |gdYYX'I G6`&\$`]bhYfZUW'Y]a]bUHyg'U Z'Ua Y[fUVVYf'UbX'ZUW']HUHyg'YUgY'cZ]bgH'U]jcb'cb' VcH`"UdHcd'UbX'XYg'fcd'W'ca di hfYg'
- @k`bc]gY'W fUWVYf]gH]WcZdfc[fYggj] YgVUb'&\$` a Y[Ud]l] Y`ja U[Y'gYbgcf'fYgi`hg]b'W]gd'W'cf'ei U]Hmi Z'f'h Y'a cghXYa UbX]b[`Vf][\ hZ'YX'UbX'XUf_ZYX` a]WcgV'cdmiUdd']WU]cbg]bWi X]b[`W]b]WU`dUa c`c[m UbX'W'f'c`c[nZ`]Z'gVYbW'UbX[Yc`c[m
- : i`"W'cf'gi V!k]bXck]b[`U`ck g'Z'f'fUd]XZ'Z'W g'UbX' gVUb]b[`cZgUa d`Yg.`&\$`Zdg'U'h'Z`"%"\$!`%&\$` fYgc'i h]cb'UbX`- *`Zdg'U'h`* (\$! (, \$'fYgc'i h]cb`
- -bWi XYg`-B: -B+HM5 B5 @MN9'gcZk UfY'Z'f'UX] UbW'X' WLa YfU'W'bf'c'Z]a U[Y'dfcW'gg]b[Z'a YUgi f]b[`UbX' Ubb'cHU]cb]bWi XYXZ'Ug'k Y`'Ug`-B: -B+HM7 5 DHI F9` gcZk UfY'Z'f'WLa YfU'W'bf'c`UbX]a U[Y'WUdhi fY"
- GY'W'i, /`%\$!V]hd]l] Y`XU]a cXYg'
- F; 6`XU]WUdhi fYX'h fci [\ `YUW`d]l] Y`W'bhU]bg" \$!V]hg` cZ'W'cf'ja U[Y]bZ'fa U]cb'fYgi`h]b[`]b`%\$&`]bhYbg]Hmi j U i Yg'
- 7 Ua YfU'W'bf'c`h fci [\ `Ub]bhi]h] Y'i gYf`HK 5-B`]bhYfZUW'fYgi`hg]b'fUd]X]a U[Y'WUdhi fY'UfW`j]b[`UbX' XcW`a YbHU]cb'Z'f`\][\ `h fci [\ di hUdd']WU]cbgZ` XYa UbX]b[`fYgYUfW`Ybj]f'c'ba Yb]g'UbX'h'UW`]b[`ZUW']h]Yg'
- ; D#C`Z'f'W'bf'c`cZdYf]d\ YfU'g'UbX'gnbW`fcb]nU]cb`
- H Y`-B: -B+HM%&\ Ug'U'W'ca dUW'iXYg][b`Yei]ddYX'k]h`U` 7!Aci bhZ'ZUW']HU]b[`]bgH'U]cb'cb'U`a]WcgV'cdY` W'cbZ][i fU]cbg]bWi X]b[`i df][\ hZ]bj YfH'X'UbX'ghf'Yc`
- -B: -B+HM%&WLa YfUg'UfY'gcZk UfY'W'ca dU]V'Y'k]h` K]bXck g`&?ZK]bXck g`LDZk]bXck g`J]gH'U` &UbX`*(! V]hcdYfU]b[`gnghYa g

Specifications

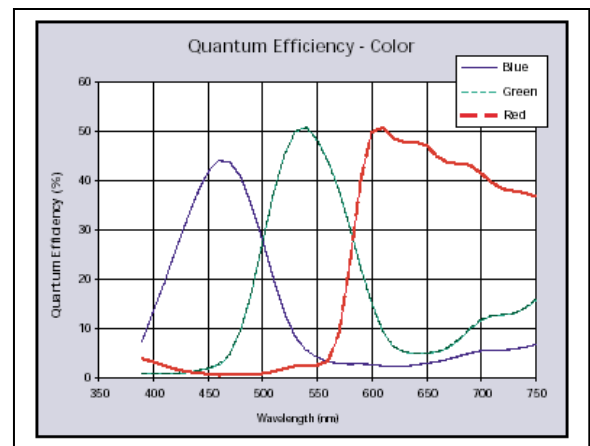
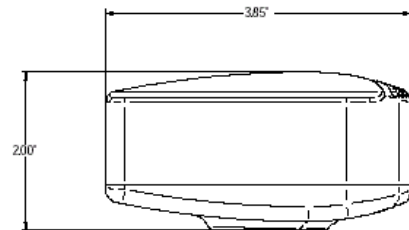
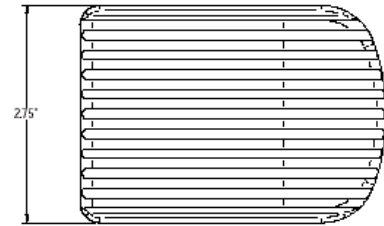
INFINITY1-2

Camera Sensor

Image Sensor	1/2" CMOS format, color or monochrome, 6.7mmx5.0mm array
Effective Pixels	1600x1200, 4.2µm square pixels
Frame Rate	20 fps at 1600x1200, 96 fps at 640x480
Dynamic Range	>60dB
Digital Output	8 and 10-bit uncompressed
Read Noise	20 e- rms

Camera Controls

Mass	300g
Power Requirement	USB bus power, or external 5VDC - 500mA
Power Consumption	~2.5Watts
Operating Temperature	0° C to +50° C
Operating Humidity	5%-95%, Non-condensing
Integration Time	84µs – 3s
Shutter	Rolling shutter with single frame capture
ROI	User Selectable
Auto Exposure	Automatic / Manual
White Balance	Automatic / Manual
Gain	1 to 10X Programmable
Interface Connector	USB 2.0 high-speed interface
Dimensions (L x W x H)	3.85 x 2.00 x 2.75 inches
Lens Mount	C-Mount lens adapter (CS-Mount option)



Recommended PC Specs:

- Pentium 4, 1.3 GHz or higher
- 512 Mb RAM
- 60 GB hard drive free space or more
- USB 2.0 Port
- Windows 2000 or XP

Minimum PC Specs:

- 600 MHz Processor
- 256 MB of SDRAM
- 20 GB hard drive free space
- USB 2.0 Port
- Windows 2K, XP, Vista 32 and 64-bit OS

Product Includes:

- INFINI TY1-2 digital camera for USB 2.0
- CD-ROM with INFINITY user application software
- TWAIN driver
- Documentation
- USB 2.0 cable

Ordering Information

INFINITY1-2C – 2 Megapixel Color Camera

**Full customization available
to meet your exact needs!**