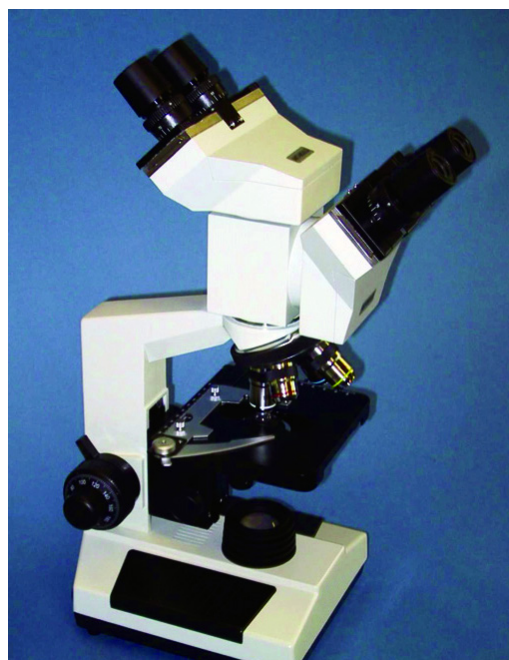


III Upright Compound Microscope with Dual View Body

FEATURES

- **Body** - Dual Optical Body allows two people to observe simultaneously, inclined 45°, able to rotate a full 360° with 55mm to 75mm interpupillary adjustment. Left Eye diopter adjustment of -5 to +5
- **Nosepiece** - Quadruple ball-bearing nosepiece with positive click stops and smooth operation
- **Eyepieces** - 10X wide field, Focal Length 25mm, Field F 18mm
- **Stage** - Size 140mm X 135mm, range of motion 75mm X 50mm Integrated mechanical stage with vernier, Low-position Coaxial Control Knobs Removable spring clip slide holder
- **Focus Mechanism** - All stainless steel and brass gear train system Adjustable Tension Control to prohibit drift; Adjustable Up-Stop to protect slides, specimen and lenses Coaxial coarse and fine adjustments with dial markings at 0.002mm increments
- **Condenser** - 1.25 N.A. 2 element Abbe Condenser with iris diaphragm Rack and Pinion focusing
- **Illumination** - 20 watt, 6-volt Halogen bulb with electronic dimmer 120-volt operation, Fuse: ½ Amp, located in the base



- **Finish** - Bone colored, baked-on enamel paint with “stipple” finish
- **Dimension** - (WHD) (in/cm) 7 x 19 x 8.5 / 17.8 x 48.25 x 21.5
- **Body Weight** - 20 lb. / 9 Kg
- **Microscope Includes** - Mold protection throughout the Optical body, Mirror assembly (for use where electricity is not available) dust cover, immersion oil, two color filters, spare halogen lamp and spare fuse

SPECIFICATIONS

DIN Standard Objective	Magnification	Numerical Aperture (mm)	Working Distance (mm)	Field of View with 10X E.P. (mm)
Achromatic	4X	0.1	17	4.5
Achromatic	10X	0.25	8	1.8
Achromatic	40X R	0.65	0.4	0.45
Achromatic	100X R (Oil)	1.25	0.25	0.18

R indicates retractable lens

ORDERING INFORMATION

Cat. No.	Description	Qty.
CP-300DH	Monocular Bright Field DIN Achromatic	each