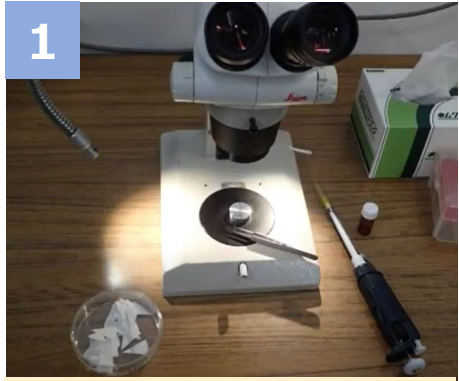


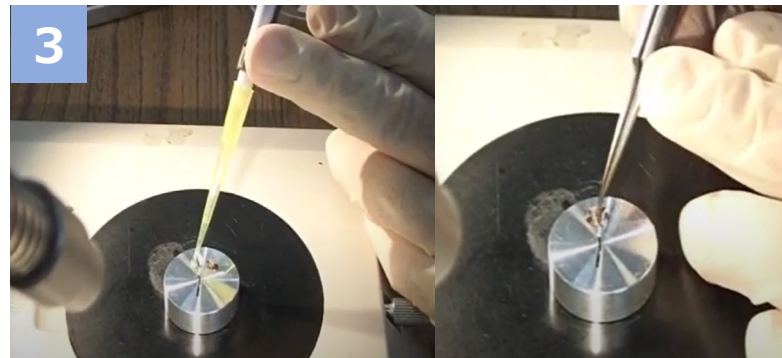
# How to use “NanoSuit®”



Prepare microscope, pipet, water-absorbing sheet (filter paper), NanoSuit solution and the object



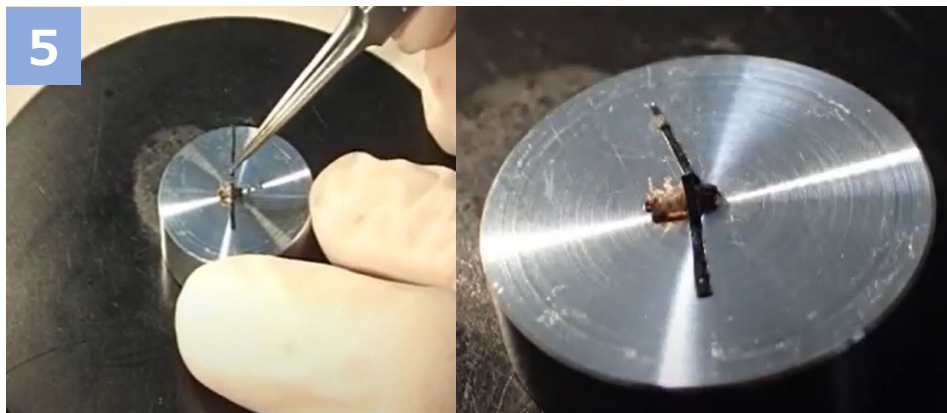
Place the object on the specimen table



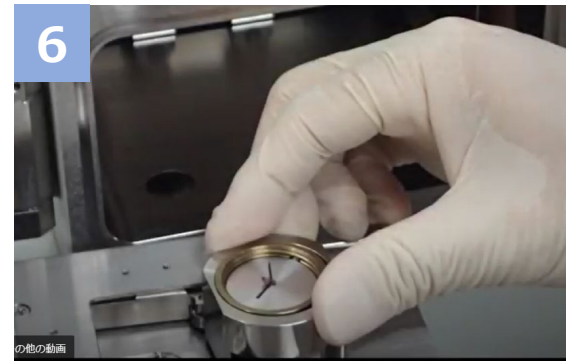
Drop NanoSuit solution using pipet and dip the object into NanoSuit solution



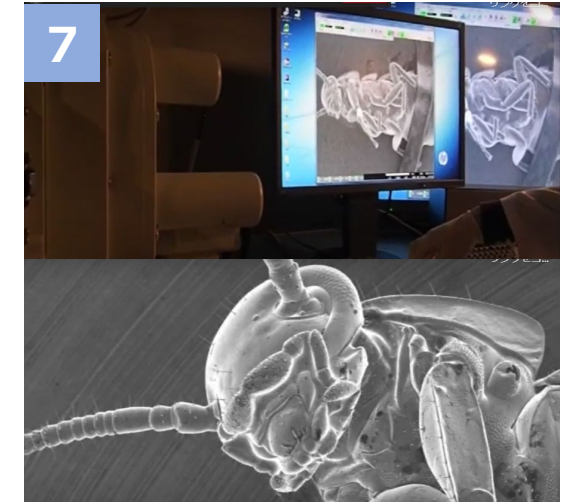
Absorb excess NanoSuit solution (In order to obtain clear image, this step is necessary)



If necessary, strap the object using conductive adhesive tape



Place the specimen table in the sample room of the electron microscopy (SEM). Then start evacuation.



After evacuation, start observation immediately. (“NanoSuit” (barrier layer) is formed by electron beam irradiation.)

## Tips

- To obtain a clear image, it is important to keep the amount of NanoSuit solution to the minimum necessary to wet the surface of the target object.
- After evacuation, start electron beam irradiation immediately. Otherwise, the object may be dried before forming “NanoSuit” (moist barrier layer).